



The LIR-02 Lidar Range Sensor is a robust overhead sensor designed for vehicle detection that uses *time of flight* mechanism for its precision.

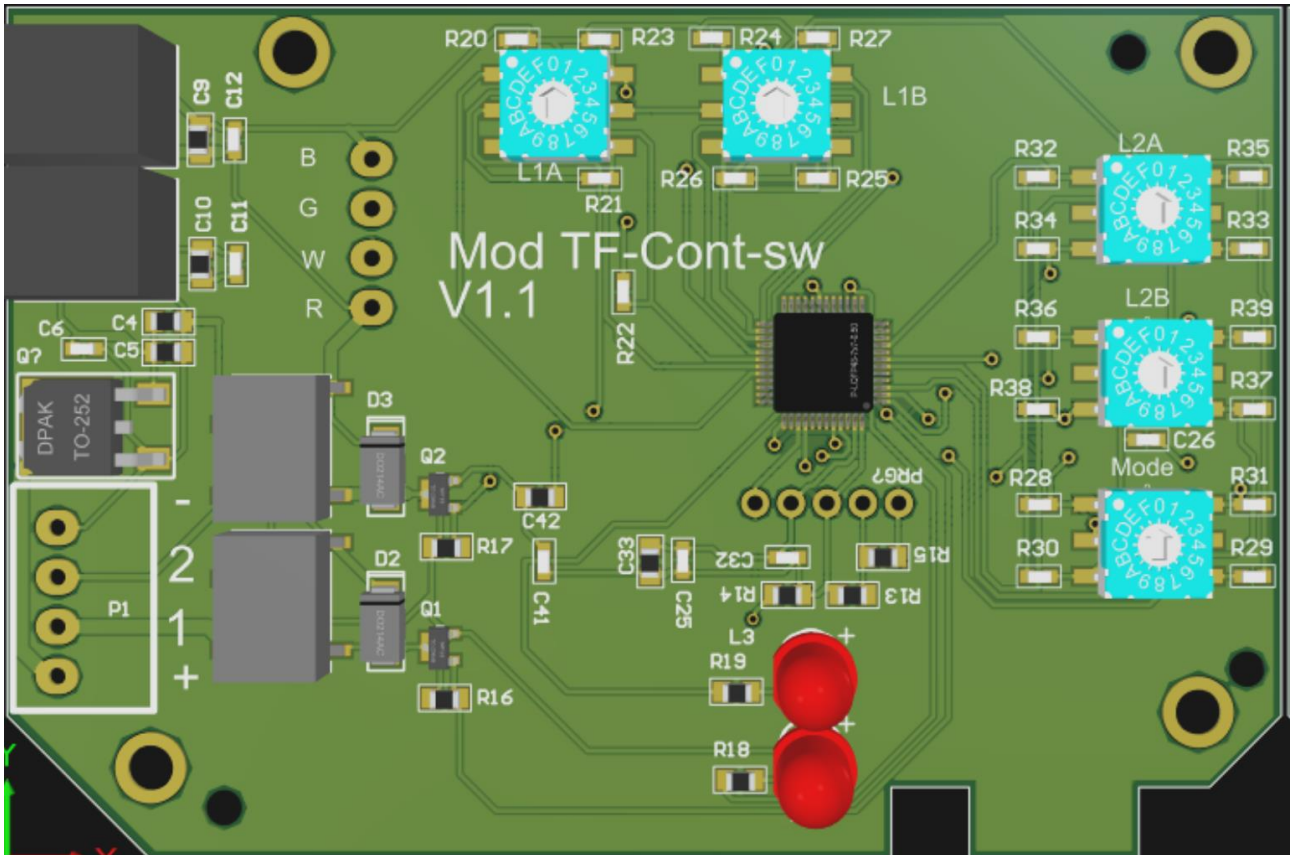
With a maximum range of 7.5m and a minimum range of 10cm, this sensor is perfect for a wide range of car parking setups. The resolution of 1cm ensures that you get precise measurements every time.

The voltage range of 12-24 VDC makes it easy to integrate into your standard setup.

The sensor also features two voltage-free relay contacts that can be individually configured based on the range in each zone. Additionally, the sensor's side vehicle detection feature and approach and depart detection make it an ideal choice for multiple site positions. The configurable relay outputs add to its versatility, making it an excellent choice for a wide range of vehicle detection scenarios.

<b>Distance (M)</b>	1	2	3	5	7	10	20	30	40
<b>Spot Size (Cms)</b>	5	10	16	26	37	52	105	156	208

### Settings



### Rotary Switch Setting

<b>Switch L1A Zone 1</b>	Minimum distance
<b>Switch L1B Zone 1</b>	Maximum distance
<b>Switch L2A Zone 2</b>	Minimum distance
<b>Switch L2B Zone 2</b>	Maximum distance

Note: Distance is multiple of 50cm so setting to 3 will be 1.5m  
 Switch Mode; For future firmware development